



*Cambrian*   
Senior Living

# Living Life to its Fullest at Cambrian Senior Living

# Comfortable Elegance. Gentle Care. Peace of Mind.

Gareth and Denise Zebley are hands-on operators who are committed to providing the highest quality of care to seniors needing assistance with activities of daily living. It is their mission to ensure Cambrian Senior Living delivers affordable excellence in a very personal manner to each resident every day. From the boutique feel of the communities to the compassionate team of care providers, Cambrian residents enjoy a level of service that exceeds expectations.

Cambrian also specializes in Memory Care, providing a greater quality of life for aging adults experiencing cognitive deficits caused by Alzheimer's, Dementia and other related disorders by embracing Teepa Snow's nationally recognized [Positive Approach to Care™ philosophy](#).



*"I am impressed and thankful for the outstanding care that mom has been receiving over the past several years. You all give her care with dignity, respect, joy, and love. It is such a comfort to all of us that she feels so at home at Cambrian."*

*-Alice's Family*



## *Comfortable Elegance.*

Cambrian is a comfortable, caring and secure environment giving residents the freedom to meet the challenges of aging in a gracious, dignified, and homelike environment.



## *Gentle Care.*

Cambrian carefully identifies each individual's requirements and preferences. Our exceptional staff strives to not only meet those needs and desires, but to exceed them with complete satisfaction. As a resident develops greater needs for assistance, our skilled staff personally adapts to gently handle every situation.

## *Peace of Mind.*

The building is completely barrier-free, and all suites are equipped with state-of-the-art emergency call systems. Staff members are on-site 24 hours a day, 7 days a week to assist residents promptly as their needs arise.



# Spacious Resident Apartments

The apartments provide a spacious living area coupled with a barrier-free, European style private bathroom which has an open concept designed to feel more generous.

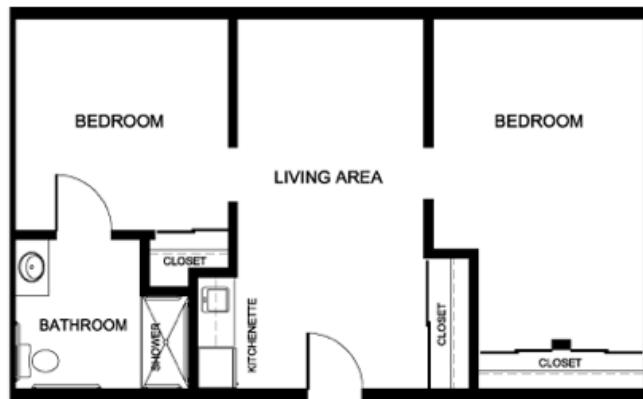
State-of-the-art emergency call systems are available in resident apartments and worn by the resident as a pendant to further promote safety.



**ONE BEDROOM**  
425 S.F.



**STUDIO**  
347 S.F.



**TWO BEDROOM**  
663 S.F.

**STUDIO**  
ASSISTED LIVING  
313 S.F.

**STUDIO**  
ASSISTED LIVING  
347 S.F.

**ONE BEDROOM**  
ASSISTED LIVING  
425 S.F.

**TWO BEDROOM**  
ASSISTED LIVING  
663 S.F.

–  
**STUDIO**  
MEMORY CARE  
347 S.F.

# Community Features

- Gracious Atrium Area
- Baby Grand Piano
- Multiple Activity Rooms - Private Entertaining
- Spacious Elegant Dining Room
- Sun Rooms - Fireplaces
- Enclosed Landscaped Courtyards
- Raised Gardens Planted Seasonally
- Therapeutic Spa Room
- Laundry Room
- Library & Billiard Room
- TV & Game Lounge
- Outside Seating Areas
- WiFi Access
- Multiple dining spaces for residents with various needs, allowing for flexible meal times
- Robust Life Enrichment programming to meet the varied interests of all residents
- Staff present 24 hours a day
- Various leisure rooms for residents to maintain a comfortable lifestyle



# Our Assisted Living Levels of Care

Cambrian features a number of standard daily services in addition to four distinct care levels, which allow our staff to effectively meet the needs of our residents. Prior to move-in, each resident and his or her family will meet with our Director of Resident Care, who is a Registered Nurse, to determine which care level ideally suits his or her needs. Level 1 care is our standard service level and is included with the monthly rent.

A highlight of our assisted living services include:

- Breakfast, lunch and dinner served daily in a spacious dining room
- A daily calendar of organized activities, entertainment, events and excursions to promote engagement and socialization
- Wellness and exercise programs
- Assistance with bathing, dressing and ambulating
- Weekly laundering of personal items, towels and bedding



## Level 1 Care

- Daily breakfast, lunch, and dinner served daily in a spacious dining room setting. A dietitian is available to manage restrictive diets prescribed by a physician.
- Daily activity schedule provided with events to promote socialization.
- Light assistance with bathing, dressing and ambulating.
- 24 hour staffing.
- Personal monitoring system
- Weekly laundering of personal items, towels, and bedding.
- Weekly housekeeping.
- Online access to activity calendar and menus available for family and friend planning purposes.
- Online access to photos available showing residents' participation in events.
- Medication management can be added to Level 1 care for a small monthly up-charge.

## Level 2 Care

Level 2 services include everything listed above plus:

- Medication management.
- Assistance with showering and daily grooming needs.
- Incontinence assistance.
- One-person transfer assistance.
- Dining and activity reminders.
- Transportation to dining and activities.

## Level 3 Care

Level 3 services include everything listed above plus:

- Scheduled toileting.
- Incontinence care resulting in frequent linen changes, laundry and/or showering.
- Frequent supervision due to memory loss or dementia.
- Fall alert device.
- Coordination of hospice care.

## Level 4 Care

Level 4 services include everything listed above plus:

- Management of exit seeking or other behavioral issues.
- Two-person transfer and/or ADL assistance.
- Feeding assistance in private dining area.
- Frequent interventions due to resistance to care.
- Custom Individualized Services.

# Menu

### Breakfast:

Scrambled Eggs and Cinnamon Rolls w/Fruit  
Coffee/Tea, Juice and Milk

### Lunch:

Roasted Pork Loin w/ Scalloped Potatoes  
Seasoned Green Beans and Dinner Roll  
Coffee/Tea, Juice and Milk

### Dinner:

Chicken Pot Pie w/ Buttered Corn  
Coffee/Tea, Juice and Milk

### Dessert Choices:

Pear Crisp  
Banana Pudding  
Rainbow Sherbet





# Life Enrichment

Socialization is promoted through our Daily Events Calendar. Families will have online access to photos showing their loved one's participation during events. Below is a sampling of a week of events.

## Monday

- 10:00 a.m. Music & Motion
- 11:00 a.m. Short Stories
- 2:00 p.m. Balance Class
- 3:30 p.m. Floral Design
- 7:10 p.m. Piano Sing Along

## Tuesday | Beauty Shop

- 10:00 a.m. Religious Service
- 1:00 p.m. Hall Hiking
- 3:00 p.m. Cooking
- 4:00 p.m. Happy Hour & Entertainment

## Wednesday

- 9:00 a.m. Basketball
- 10:30 a.m. YouTube IT
- 1:00 p.m. Movie & Memories
- 3:00 p.m. Courtyard Conversation
- 4:00 p.m. Music Makers

## Thursday | Beauty Shop

- 9:00 a.m. Inter-generational Noodle Sports
- 10:00 a.m. Daily Chronicle & Short Stories
- 1:00 p.m. Mixed Cards
- 3:00 p.m. Bowling
- 4:00 p.m. Happy Hour & Entertainment

## Friday

- 9:00 a.m. Noodle Volleyball
- 11:30 a.m. Reminisce
- 12:00 p.m. Outdoor Picnic
- 2:00 p.m. Drum Circle
- 7:10 p.m. Relaxing Hand Massages

## Saturday

- 10:00 a.m. Chair Aerobics
- 1:30 p.m. Courtyard Devotions
- 3:00 p.m. Garden Tending
- 6:10 p.m. Detroit Sports

## Sunday

- 9:30 a.m. Catholic Communion
- 11:00 a.m. Hymn Sing
- 1:00 p.m. Community Cards
- 4:05 p.m. Courtyard Conversation





[CambrianSeniorLiving.com](http://CambrianSeniorLiving.com)

52365 Ten Mile Road, South Lyon, MI 48178 | 248.560.6414